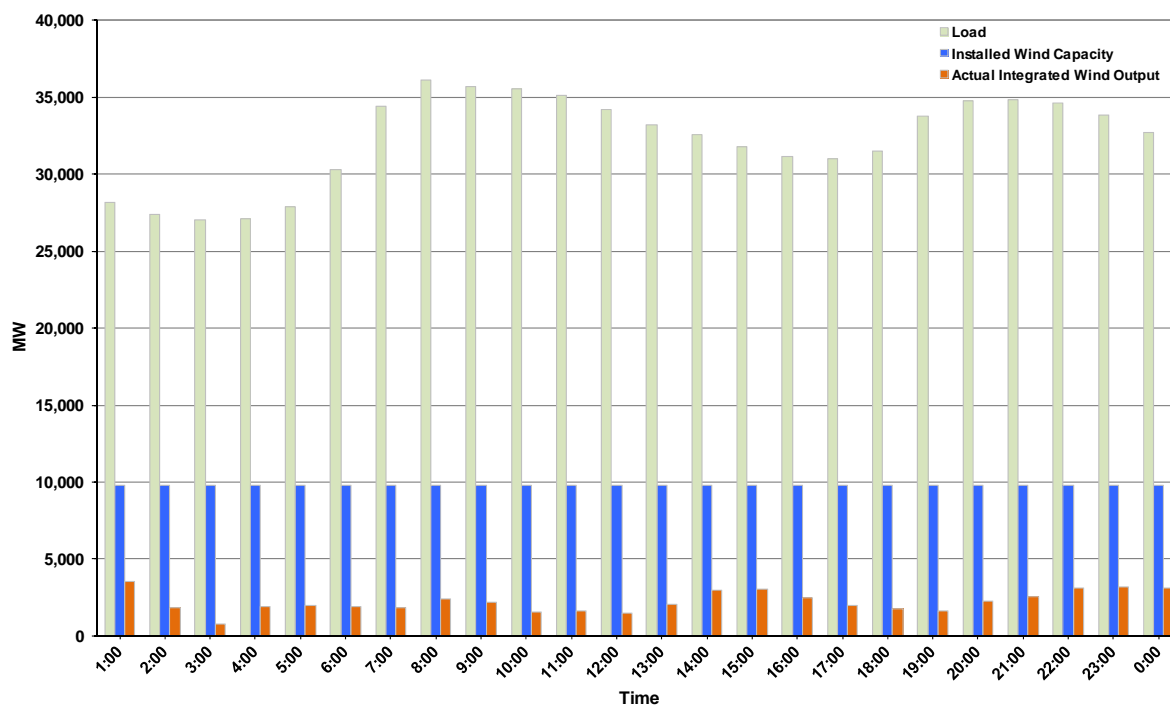




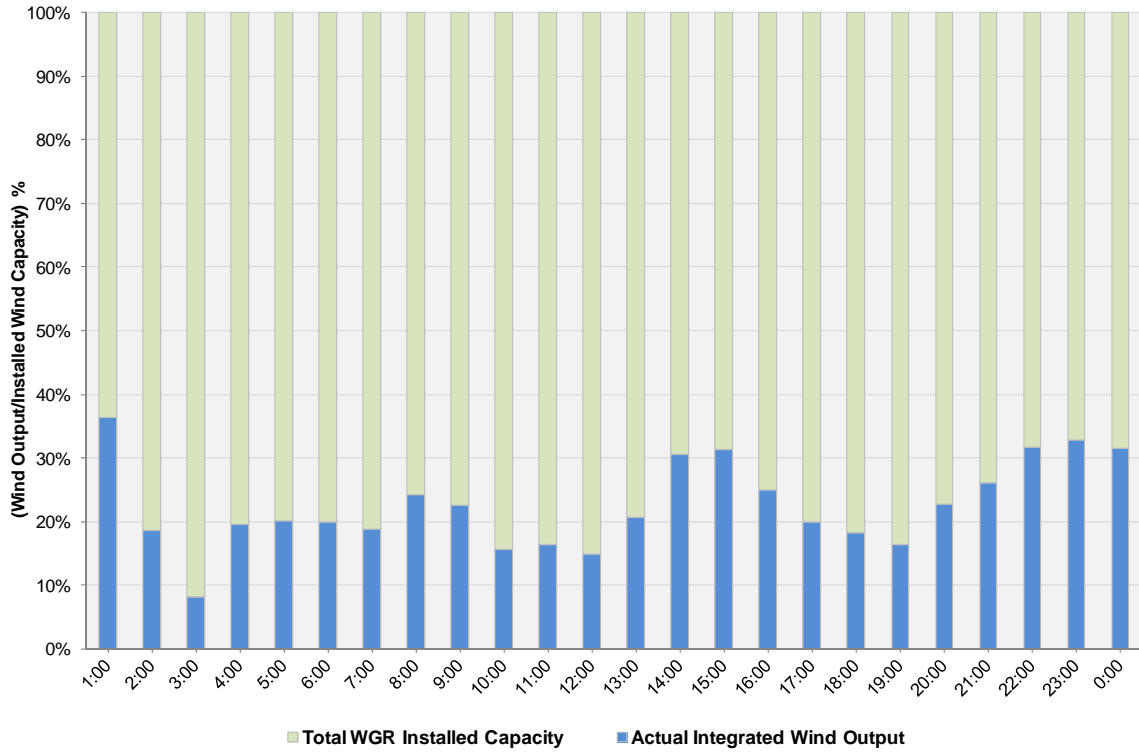
ERCOT Grid Operations Wind Integration Report: 02/10/12

Peak Load	36,107 MW
Load Peak Hour (HE)	08
Wind over Peak	2,383 MW
Wind Record 10/07/11	7,400 MW
Max Wind Value	4,270 MW
Wind Peak Time	00:00
Wind Integration %	14.87%

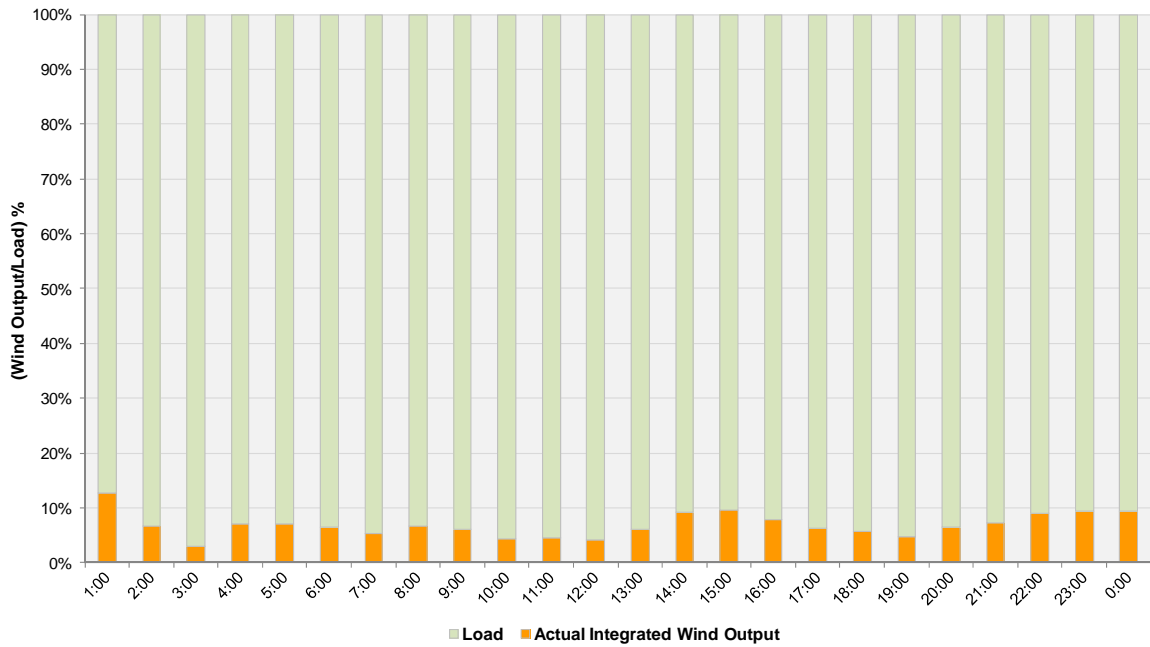
**Hourly Average Actual Load vs. Actual Wind Output
02-10-2012**



Actual Wind Output as a Percentage of the Total Installed Wind Capacity
02-10-2012



Actual Wind Output as a Percentage of the ERCOT Load
02-10-2012



ERCOT Load vs. Actual Wind Output 2/3/2012 - 2/10/2012

